

05 Spermatogenesis

Key Choices

- | | |
|---|------------------------------------|
| A. Follicle-stimulating hormone (FSH) | E. <input type="radio"/> Sperm |
| B. <input type="radio"/> Primary spermatocyte | F. <input type="radio"/> Spermatid |
| C. <input type="radio"/> Secondary spermatocyte | G. Testosterone |
| D. <input type="radio"/> Spermatogonium | |

- _____ 1. Primitive stem cell
- _____ 2. Contain 23 chromosomes (3 answers)
_____ and _____
- _____ 3. Product of meiosis I
- _____ 4. Product of meiosis II
- _____ 5. Functional motile gamete
- _____ 6. Two hormones necessary for sperm production

Then label the cells with leader lines. Select different colors for the cell types with color-coding circles listed in the key choices and color in the coding circles and corresponding structures on the figure. In addition, label and color the cells that produce testosterone.

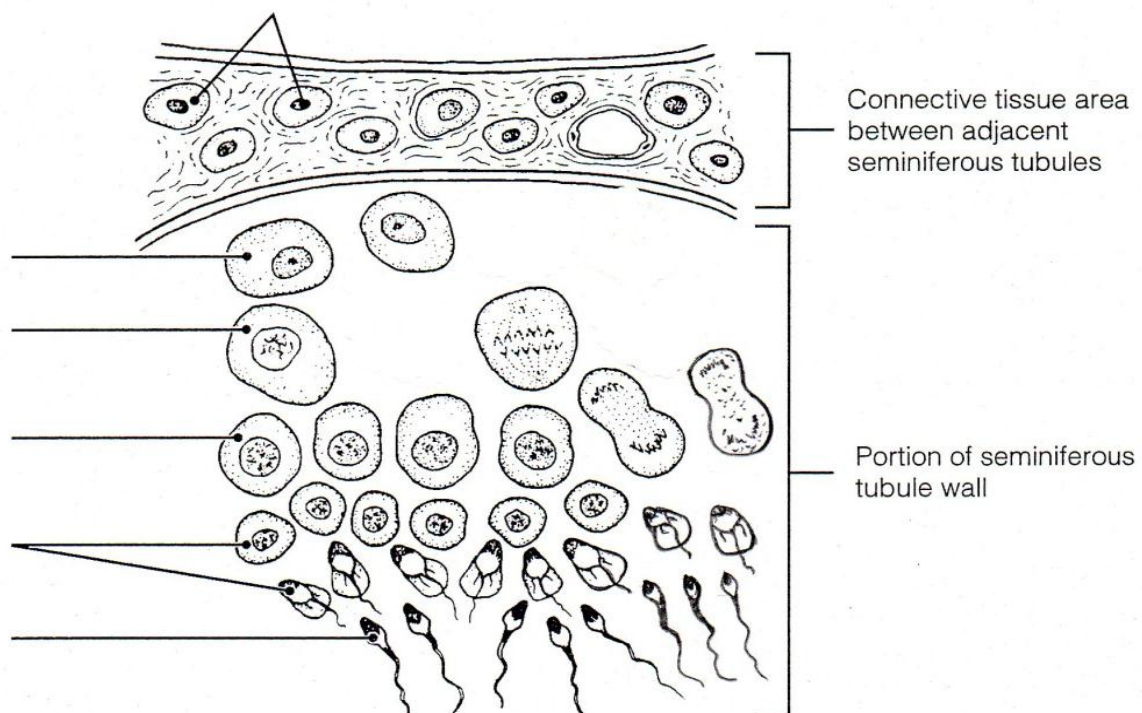


Figure 16-3